

Home building consents pass 30,000 a year

Embargoed until 10:45am – 19 December 2016

The annual number of homes consented has passed 30,000 for the first time in 11 years, Statistics New Zealand said today.

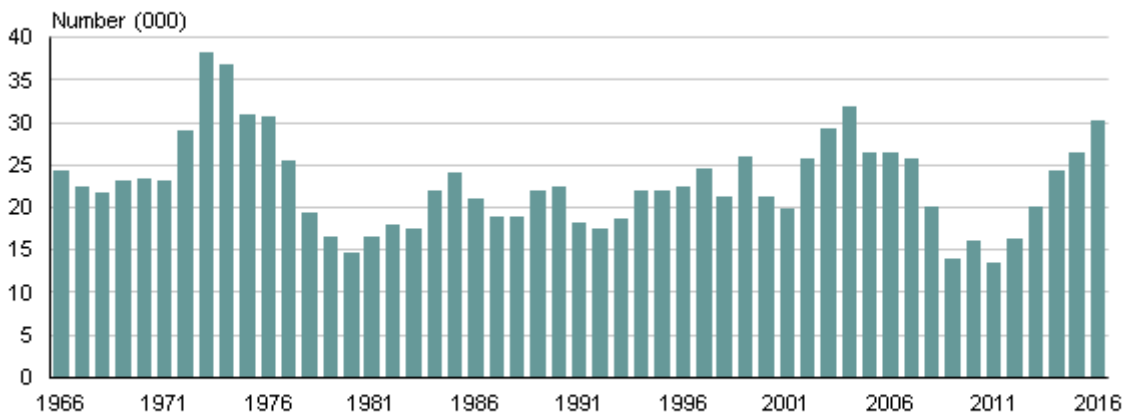
In the year ended October 2016, more than twice as many homes were consented as in 2011 (when the number reached a 60-year low).

However, this latest number is 10,000 fewer than the all-time high of 40,000 reached in early 1974. It is also 3,000 fewer than the 29-year high in mid-2004.

“One-third of the homes consented over the past year were in Auckland. That’s almost 10,000, compared with 9,000 in the previous year,” business indicators senior manager Neil Kelly said.

“Canterbury and Waikato also feature quite prominently in these statistics, although in Christchurch the post-quake residential rebuild is slowly winding down.”

New dwellings consented
Year ended October



Source: Statistics New Zealand

Home consents rise in October

In October 2016, 2,575 new homes were consented.

In seasonally adjusted terms, the number of new homes consented rose 2.6 percent, although the trend is showing signs of flattening after recent rises.

Delay to the release

Due to the 14 November earthquake, we delayed this release from its scheduled date of 30 November 2016. The delay ensures the information is produced to its usual quality level.

Ends

For media enquiries contact: Neil Kelly, Christchurch 021 999 517, info@stats.govt.nz
 Authorised by Liz MacPherson, Government Statistician, 19 December 2016