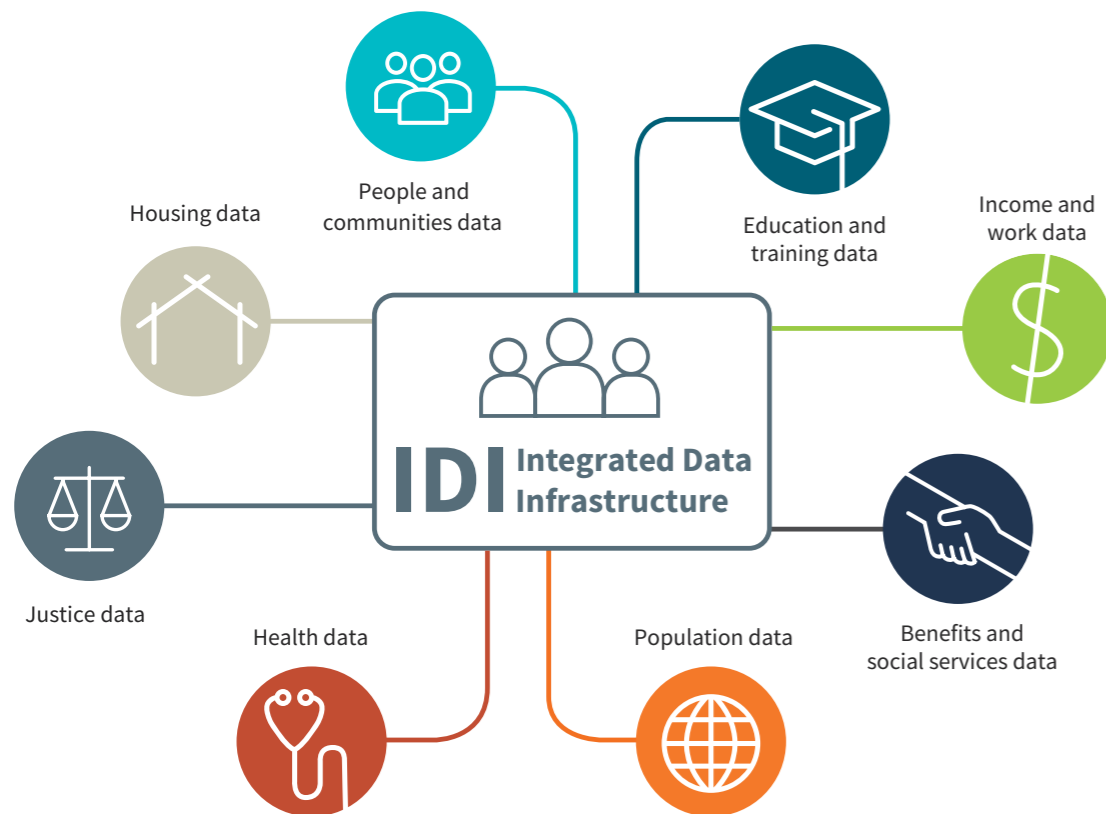


Stats NZ's Integrated Data Infrastructure (IDI) is a large research database containing de-identified microdata about people and households.



The IDI contains person-centred microdata from a range of government agencies, Stats NZ surveys including the 2013 Census, and non-government organisations. For more information about data in the IDI, see

www.stats.govt.nz/integrated-data/integrated-data-infrastructure

The Longitudinal Business Database (LBD) complements the IDI with microdata about businesses. For more information about data in the LBD, see

www.stats.govt.nz/integrated-data/longitudinal-business-database

Benefits and social services data

- ACC injury claims – from 1994
- Benefits – from 1990
- Children's Action Plan – from 1996
- Child, Youth, and Family – from 1991
- Early Start Project – from 2016
- Family Start – from 2008
- Student loans and allowances – from 1992
- Working for Families – from 2003
- Youth services – from 2004

Education and training data

- Early childhood education participation – from 2008
- Industry training – from 2001
- Primary education – from 2007
- Programme for the International Assessment of Adult Competencies – from 2014
- Secondary education – from 2004
- Targeted training – from 2001
- Tertiary education – from 1994

Health data

- B4 School Checks – from 2011
- Cancer registrations – from 1995
- Chronic conditions – from 2007
- General medical services claims – from 2002
- Health tracker – 2006–14
- Immunisation – from 2006
- interRAI – from 2014
- Laboratory claims – from 2003
- Maternity – from 2003
- Mortality – from 1988
- National Booking Reporting System – from 2003
- National Needs Assessment and Service Coordination Information System (SOCRATES)
- National non-admitted patient collection – from 2007
- NES enrolments – from 2019
- Pharmaceuticals – from 2005
- PHO enrolments – 2003–2019
- Population cohort demographics and addresses – from 2004
- PRIMHD – from 2008
- Privately funded hospital discharges – from 2001
- Publicly funded hospital discharges – from 1988

Housing data

- Social housing – from 2000
- Tenancy – from 2000

Income and work data

- Household economic survey – from 2006
- Household labour force survey – from 2006
- NZ income survey – from 2006
- Survey of family, income, and employment – 2002–10
- Tax and income – from 1999

Justice data

- Court charges – from 1992
- New Zealand crime and victims survey – from 2018
- NIA links – from 2009
- Recorded crime: offenders – from 2009
- Recorded crime: victims – from 2014
- Sentencing and remand – from 1998

People and communities data

- Auckland City Mission – from 1996
- Disability survey – 2013
- Driver licence and motor vehicle registers
- General social survey – 2008–2018
- Longitudinal immigration survey of NZ – 2005–09
- Migrant survey – from 2012
- Te Kupenga – 2013

Population data

- Census – 2013, 2018
- Births, deaths, and marriages – from 1840
- Border movements – from 1997
- Civil unions – from 2005
- Departure and arrival cards – from 1997
- Visa applications – from 1997

